



Annual General Meeting 12th November 2021



The New Lodge,
Upton Lane,
Shrewsbury,
SY2 5RR

Tel: 01743 730005
info@sya.org.uk
www.sya.org.uk

REGISTERED CHARITY NO:
1172685

CHAIR'S ANNUAL REPORT

2020-21 has proved to be another 'interesting' year for SYA. It has though, been another year of successes in supporting the young people of Shropshire.

The Board's thanks must go to staff and volunteers for getting clubs going again after various stops and starts. Its clear that young people have been desperate to get back to the activities on offer from clubs and organisations supported by SYA, and the services offered directly. But of utmost importance we safely maintained personal contact with very vulnerable young people.

SYA stepped into the frontline of Covid measures too. We worked with other agencies such as the RCC to help with the testing and vaccination roll out, staff travelled miles and put in extra hours to complete this work and:

- helped to vet over 1000 volunteers for the vaccination centres
- made hundreds of badges for volunteers
- designed the process for; and ran some of the lateral flow testing centres.

Staff also helped to distribute food parcels to families in Telford

Inevitably, some part time staff had to be furloughed, but they came off furlough as soon as possible and several staff continued to work throughout, usually from home, using IT and the now ubiquitous Zoom sessions to keep communications open



The National Youth Agency worked tirelessly to keep everyone up to date with changing restrictions and precautions, as well as offering examples of how to get things moving again. Their bulletins were circulated by SYA to all those working across the county to get young people's support up and running again.

Here are some examples of the amazing work that has been undertaken:



- The Alternative Curriculum Project resumed as soon as the schools reopened
- SYA staff trained the voluntary leaders across the county to use Zoom to keep in touch, which meant that young people could keep in touch with each other too
- The LGBT+ support continued so that young people in this group could meet safely
- Online training courses for leaders were put on
- SYA helped clubs to identify and seek grant aid ready for re-opening.

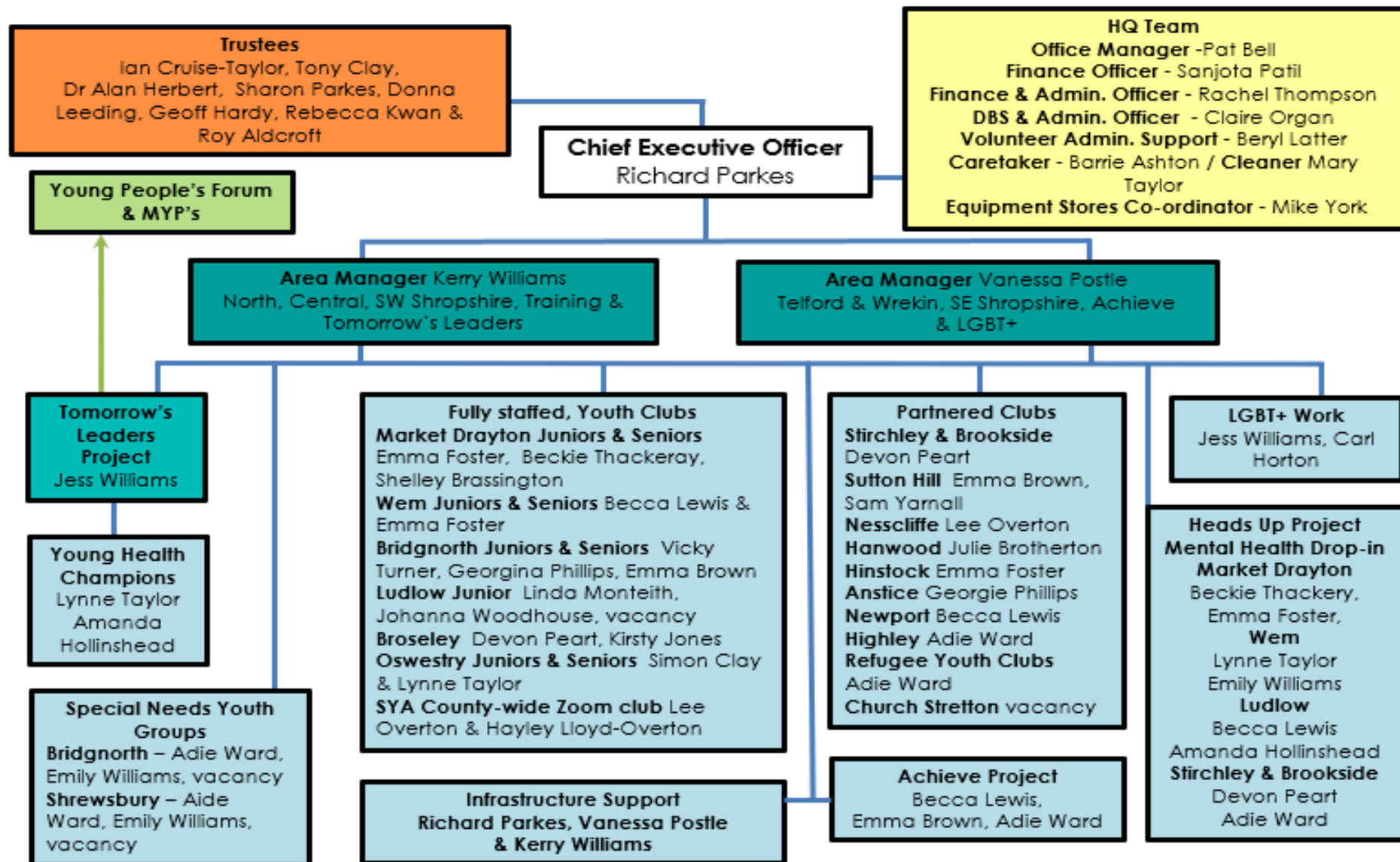
While all this has been going on, SYA has continued to manage the risks created by the pandemic and from continued pressure on funding to its core business and stability. Our largest challenge being Shropshire Council's switch from funding youth clubs in market towns to direct delivery of support aimed at vulnerable young people. In response, some town councils commissioned us to continue with youth club delivery. We have also re-focused our funding including appointing our very own fundraiser to seek sponsorship, business and philanthropic giving.

The Board is very grateful for the commitment, resilience, energy and drive of the young people themselves, the volunteers, staff and management team who all contribute to the success that is SYA.

Best Wishes
Ian Cruise-Taylor
Chair, SYA



STAFFING STRUCTURE FOR 2021



THE IMPACT WE HAVE ON YOUNG PEOPLE

Supported
6279
young people
(under 18) weekly
receive informal
education and
support

1537
in Girlguiding

Including

2776
in
Scouting

47 Virtual
Youth Clubs during
lockdown

Provided
275
Safe places for young
people, weekly

Over
25
young people attend
our bespoke LGBTQ
clubs, which
remained open during
some lockdowns

Enabled
362
young people with a
disability to enjoy out of
school activities

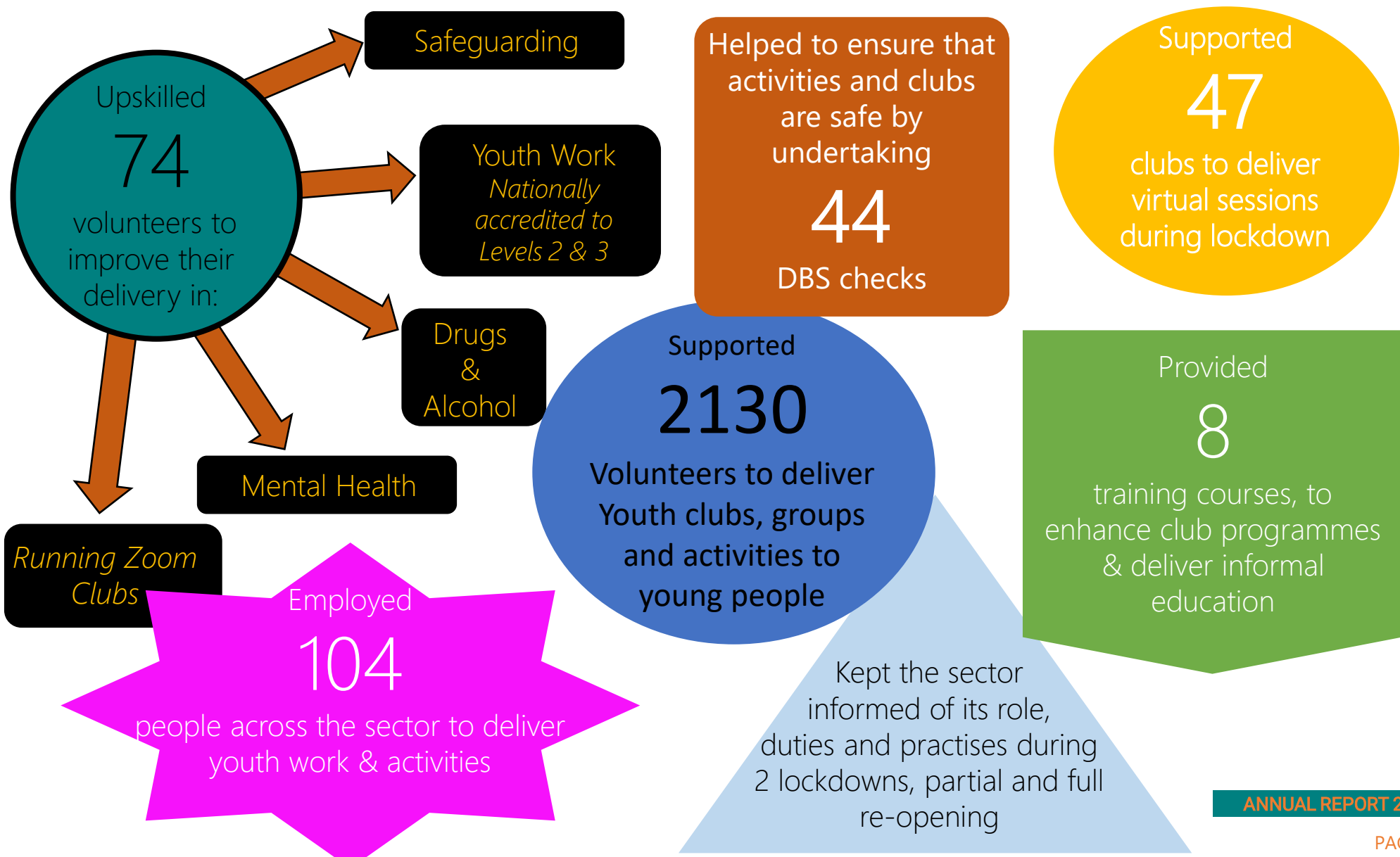
Delivered Alternative
curriculum work to young
people on Education Health
Care Plans (EHCP'S) throughout
lockdowns

Created opportunities
for
158
Young people under
18 to volunteer

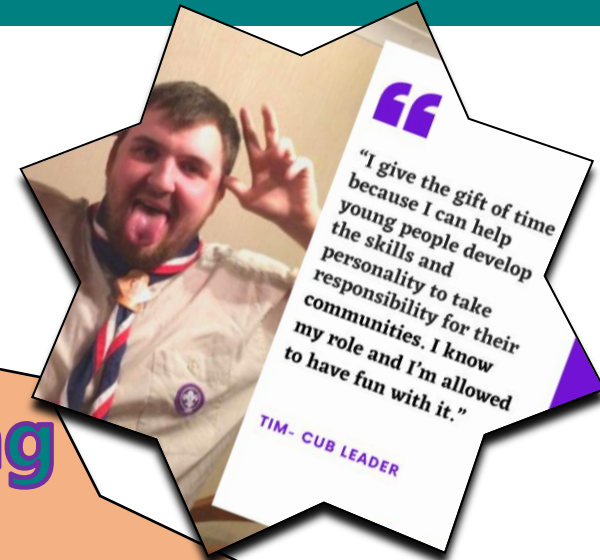
903
Young people over 18 take
part in youth activities

779
of them with **Shropshire
Federation of Young
Farmers**

THE IMPACT WE HAVE ON THE SECTOR



FINANCIAL CONTRIBUTION MADE BY VOLUNTEERS



“I give the gift of time because I can help young people develop the skills and responsibility to take communities for their my role and I’m allowed to have fun with it.”

TIM- CUB LEADER

**TOTAL VALUE of volunteering
in Youth Work this year is
£3,975,353.31**



“I give the gift of time because it’s one of the most precious things you can give to someone, yet costs nothing. In this fast paced world just taking the time to listen, share, advise, or teach someone has more impact than anything that can be bought. The rewards as a leader are the best, and often include laughter, trust, smiles and fun.”

MICHELLE- LUDLOW GUIDING



FINANCE: Statement of financial activities for the period 31st March 2021

| STATEMENT OF FINANCIAL ACTIVITIES | | | | | |
|---|------|---------------------------|-------------------------|---------------|---------------|
| FOR THE PERIOD 31 MARCH 2021 | | | | | |
| | | | | 2021 | 2020 |
| | | Unrestricted Funds | Restricted Funds | Total | Total |
| | Note | | | | |
| Income & Endowments | | | | | |
| Incoming Resources from generated funds | | | | | |
| Donations and legacies | 3 | 26382 | 161914 | 188296 | 32813 |
| Charitable activities | 4 | 349717 | | 349717 | 366429 |
| Other trading activities | 5 | 3665 | | 3665 | 21361 |
| Interest income | | 1737 | | 1737 | 3169 |
| JRS Grants | | 47934 | | 47934 | - |
| TOTAL INCOME | | 429435 | 161914 | 591349 | 423772 |
| Expenditure | | | | | |
| Governance costs | 6 | 8764 | - | 8764 | 5693 |
| Raising funds | | 2700 | - | 2700 | - |
| Charitable activities | 7 | 346842 | 34530 | 381372 | 373784 |
| Separate Material Items | 8 | 26271 | 293 | 26564 | 31895 |
| Other | 9 | 2236 | 733 | 2969 | 2769 |
| TOTAL EXPENDITURE | | 386813 | 35556 | 422369 | 414141 |
| Net incoming resources/(resources expended)before revaluations and investment assets disposals | | 42622 | 126358 | 168980 | 9631 |
| Gains and losses on revaluations and disposals of investment assets | | | | | |
| (loss)/profit on investments sold | - | | - | - | - |
| (loss)/profit on revaluation of investments | - | | - | - | - |
| Net movement in funds | | 42622 | 126358 | 168980 | 9631 |
| Total funds brought forward | | 206762 | 2901 | 209663 | 200032 |
| Total funds carried forward | | 249384 | 129259 | 378643 | 209663 |

FINANCE: Balance sheet at 31st March 2021

SYA

(FORMERLY SHROPSHIRE YOUTH ASSOCIATION)

BALANCE SHEET AT 31 MARCH 2021

| | | | 2021 | | 2020 |
|---|-------|--------|--------|--------|--------|
| | Note | £ | £ | £ | £ |
| Fixed Assets | | | - | | - |
| Tangible assets | | | - | | - |
| Investments | | | - | | - |
| Current Assets | | | | | |
| Debtors | 12 | 21308 | | 16224 | |
| Cash at Bank and in hand | 13 | 425518 | | 304063 | |
| | | 446826 | | 320287 | |
| Current Liabilities | | | | | |
| Bank Overdraft | | | | | |
| Creditors: amounts falling due within one year | 14 | 68183 | | 110624 | |
| | | 68183 | | 110624 | |
| Net current assets | | | 378643 | | 209663 |
| Total assets less current assets/(liabilities) | | | 378643 | | 209663 |
| Capital and Reserves | 15,16 | | | | |
| Permanent Endowment Funds | | | - | | - |
| Restricted Funds | | | 129259 | | 2901 |
| Unrestricted Funds | | | 249384 | | 206762 |
| | | | 378643 | | 209663 |
| Notes can be found on the filed accounts | | | | | |

BRINGING US UPTO DATE AND THE FUTURE

This report is for the year 2020/21 but, at the point of writing for our AGM, we already know that the Country is emerging from the pandemic and there is promising recovery in the youth sector. This is underpinned by the Government's acknowledgement that youth work is an essential service, investing in training, issuing a National curriculum for youth work and starting to strengthen the statutory duty on upper tier authorities to deliver or commission youth work.

Through out this year, we have used the NYA's sector guidance to ensure that we operated safely. SYA was one of the first organisations to launch Zoom Youth Clubs, which during the first lock down were very successful with 47 clubs running per week. By the time we went into the second lockdown, young people were weary of screen time and numbers dropped off. As we employ JNC qualified staff, we are classified as essential workers and so some aspects of our work, like the Heads Up mental health projects, XYZ group for LGBTQ+ young people and our Step Forward alternative curriculum project, carried on physically



We also undertook doorstep visits, one to one phone support, activity boxes with food supplies and detached youth work.

During the year we started our new Lottery funded project called **Tomorrow's Leaders**, which encompasses SYA Health Champions, Young Leader Training, Youth Forums and Members of Youth Parliament (MYP's), but our biggest challenge was and still is to support youth clubs across the County to open, or re-open.

In December 2020 the number of clubs planning to re-open had dropped to 77 from 124, a 38% reduction.

Since the end of the Spring term 2021, thanks to a determined effort from our team, we have built from this low point to 98 clubs open (this includes new and re-opened clubs) showing that the recovery is strong with only an 21% reduction on pre-pandemic figures.

As we move towards 2022, we will continue to support clubs to open, whether they are clubs that closed or new ones, to ensure that the support, opportunities and life changing interventions that youth workers deliver will continue.

I want to thank all the fantastic youth workers and committee members both paid and voluntary for their commitment and enthusiasm, for helping us to get great clubs and projects up and running again in the wonderful County of Shropshire.

Richard Parkes
Chief Executive Officer

SUPPORT & FUNDING

Supporting & delivering youth activity with funding from:

Anstice

BBC Children in Need,

Broseley Youth Club

Hub on the Hill

Millichope Foundation,

The National Lottery,

Unitary, Town and Parish Councils:

- Bridgnorth
- Greater Ness & Little Ness,
- Hanwood
- Hinstock
- Ludlow
- Market Drayton
- Newport
- Oswestry
- Shropshire Council
- Stirchley & Brookside,
- Wem
- Whitchurch



